



# BARCELONA

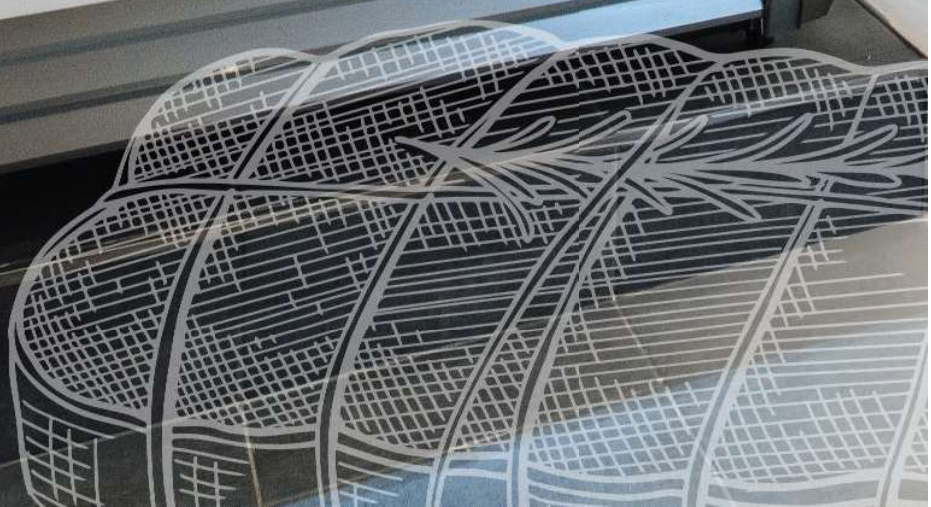
## SHOWCASES



 **Infrico**



 Infrico



# Barcelona

## SHOWCASES

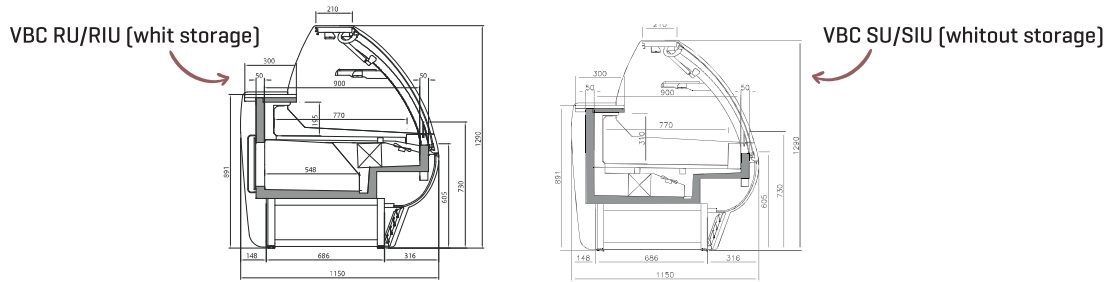
### “MEAT & DELI”

#### CHARACTERISTICS

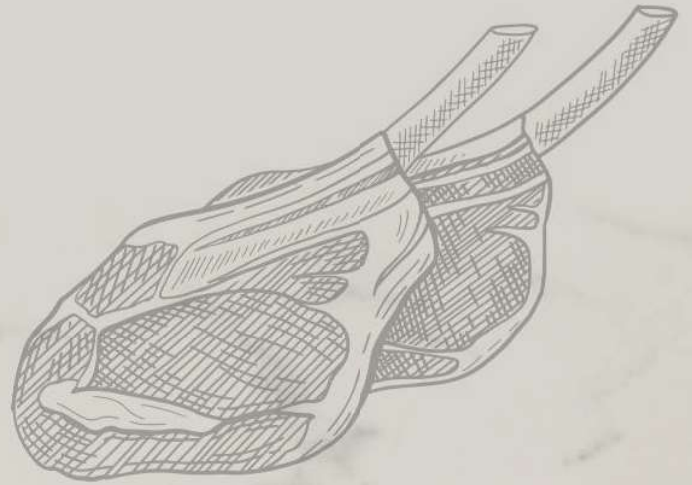
- Narrow, remote refrigeration display case with straight glass and front structure for sale in traditional assisted service.
- Specifically designed for meats and packaged convenience foods, delicatessen, dairy products and sandwiches.
- Ventilated cooling system.
- Refrigerated reserve to multiply the options of the sales service.
- Ergonomic worktop in AISI304 stainless steel finish.
- Intermediate tempered glass shelf.
- Upper worktop in tempered glass.
- Display area in AISI304 quality stainless steel.
- Intermediate decoration in lacquered DM with high resistance to humidity.
- Lifiable front windows for easy access to the display for cleaning.
- Structure and glass support in anodized aluminium profiles.
- High efficiency equipment:
  - Double meat-coloured LED lighting on display.
  - Decorative LED lighting.
  - Low consumption fans.



# MODULAR DISPLAY CABINET VENTILATED WITH BUILT-IN GROUP



MODEL WHIT STORAGE	VBC 9 RU/RIU	VBC 12 RU/RIU	VBC 15 RU/RIU	VBC 18 RU/RIU	VBC 25 RU/RIU	VBC 31 RU/RIU	VBC 37 RU/RIU
PRICE							
MODEL WHITOUT STORAGE	VBC 9 SU/SIU	VBC 12 SU/SIU	VBC 15 SU/SIU	VBC 18 SU/SIU	VBC 25 SU/SIU	VBC 31 SU/SIU	VBC 37 SU/SIU
PRICE							
MEASUREMENTS	938 x 1150 x 1290 mm.	1250 x 1150 x 1290 mm.	1562 x 1150 x 1290 mm.	1875 x 1150 x 1290 mm.	2500 x 1150 x 1290 mm.	3125 x 1150 x 1290 mm.	3750 x 1150 x 1290 mm.
TEMPERATURE	0°C/+6°C						
CLIMATE CLASS	3 / 25°C						
VOLTAGE FREQUENCY	230V/1ph/50Hz						
CONTROLLER	Digital						
MATERIAL	Ext: plastic-coated steel / Worktop: AISI 304 stainless steel / Display top: Plastic-coated steel. Inox Aisi 304 [Mod. RIU/SIU]						
INSULATION	40kg/m 3/ Free CFC's / Zero ODP-GWP						
CAPACITY	82	109	137	164	219	273	328
DIPSLAY AREA	0,92	1,23	1,53	1,84	2,45	3,06	3,68
COMPRESSOR	1/3	1/2	3/4	3/4	1+1/4	1+1/4	1+1/4
SHELVES	1 [+1 optional]						
SIDE PANELS [2]	30 + 30						
COLD SYSTEM	VENTILATED						
DEFROST	AUTOMATIC						
EVAPORATION	FORCED						
POWER	394	531	590	681	1115	2166	2190
REFRIGERATON POWER	---	---	---	---	---	---	---
CONSUMPTION	5.18	7.01	7.8	8.9	14.6	28.6	28.9
REFRIGERANT	<b>R290</b>						
OPTIONAL	Rear sliding doors / Rear night curtains / Curved heated glass [see models]						



MEAT AND DELI

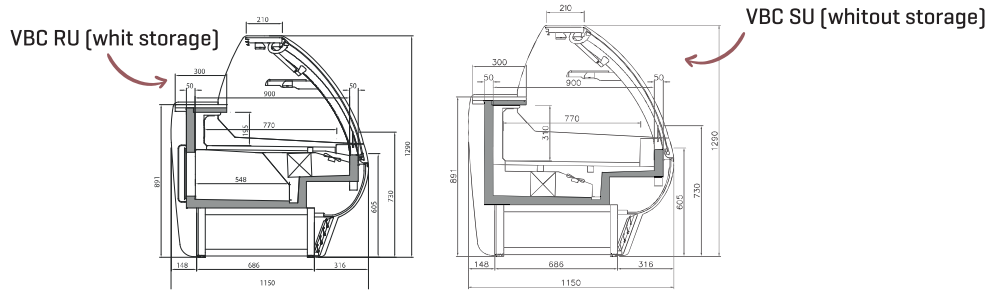
# VBC15RU

INCORPORATED GROUP

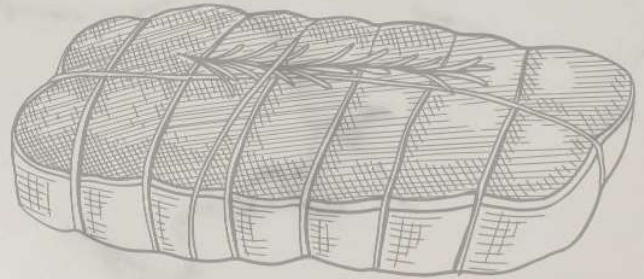


# MODULAR ANGLES DISPLAY CABINET

## COLD VENTILATED BUILT-IN GROUP



MODEL WHIT STORAGE	VBC 90 AA RU/RIU	VBC 45 AA RU/RIU	VBC 90 AC RU/RIU	VBC 45 AC RU/RIU
PRICE				
MODEL WHITOUT STORAGE	VBC 90 AA SU/SIU	VBC 45 AA SU/SIU	VBC 90 AC SU/SIU	VBC 45 AC SU/SIU
PRICE				
MEASUREMENTS	1326 x 1150 x 1290 mm.	1108 x 1150 x 1290 mm.	1887 x 1150 x 1290 mm.	1470 x 1150 x 1290 mm.
TEMPERATURE	0°C/+6°C			
CLIMATE CLASS	3 / 25°C			
VOLTAGE FREQUENCY	230V/1ph/50Hz			
CONTROLLER	Digital			
MATERIAL	Ext: plastic-coated steel / Worktop: AISI 304 stainless steel / Display top: Plastic-coated steel. Inox Aisi 304 [Mod. RIU/SIU]			
INSULATION	40kg/m 3 / Free CFC's / Zero ODP-GWP			
CAPACITY	----	----	----	----
DISPLAY AREA	1,09	0,60	1,43	0,72
COMPRESSOR	5/8	3/8	3/4	1/2
SHELVES	1 [+1 optional]			
SIDE PANELS [2]	30 + 30			
COLD SYSTEM	VENTILATED			
DEFROST	AUTOMATIC			
EVAPORATION	FORCED			
POWER	1025	700	1110	780
REFRIGERATION POWER	----	----	----	----
CONSUMPTION	14,4	9,8	15,5	10,9
REFRIGERANT	<b>R290</b>			
OPTIONAL	Rear sliding doors [see models]			



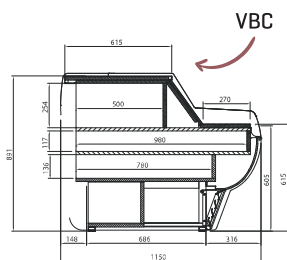
MEAT AND DELI

# VBCLine

INCORPORATED GROUP

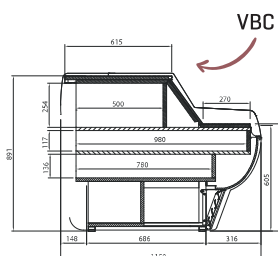


# CASH TILL TABLE INCORPORATED GROUP



MODEL	VBC 9 C	VBC 12 M	VBC 15 M	VBC 12 MHD
PRICE				
MEASUREMENTS	938 x 1150 x 906 mm.	1250 x 1150 x 906 mm.	1562 x 1150 x 906 mm.	1250 x 1150 x 906 mm.
MATERIAL	Ext: plastic-coated steel / Worktop: AISI 304 stainless steel / Display top: Plastic-coated steel. Inox Aisi 304 (Mod. RIU/SIU)			
DISPLAY AREA	0,5	0,74	0,92	
SIDE PANELS [2]	30 + 30			

# CASH TILL TABLE



MODEL	VBC 9 CP	VBC 12 MP	VBC 15 MP	VBC 12 MHDP
PRICE				
MEASUREMENTS	938 x 1150 x 906 mm.	1250 x 1150 x 906 mm.	1562 x 1150 x 906 mm.	1250 x 1150 x 906 mm.
MATERIAL	Ext: plastic-coated steel / Worktop: AISI 304 stainless steel / Display top: Plastic-coated steel. Inox Aisi 304 (Mod. RIU/SIU)			
DISPLAY AREA	0,55	0,74	0,92	----

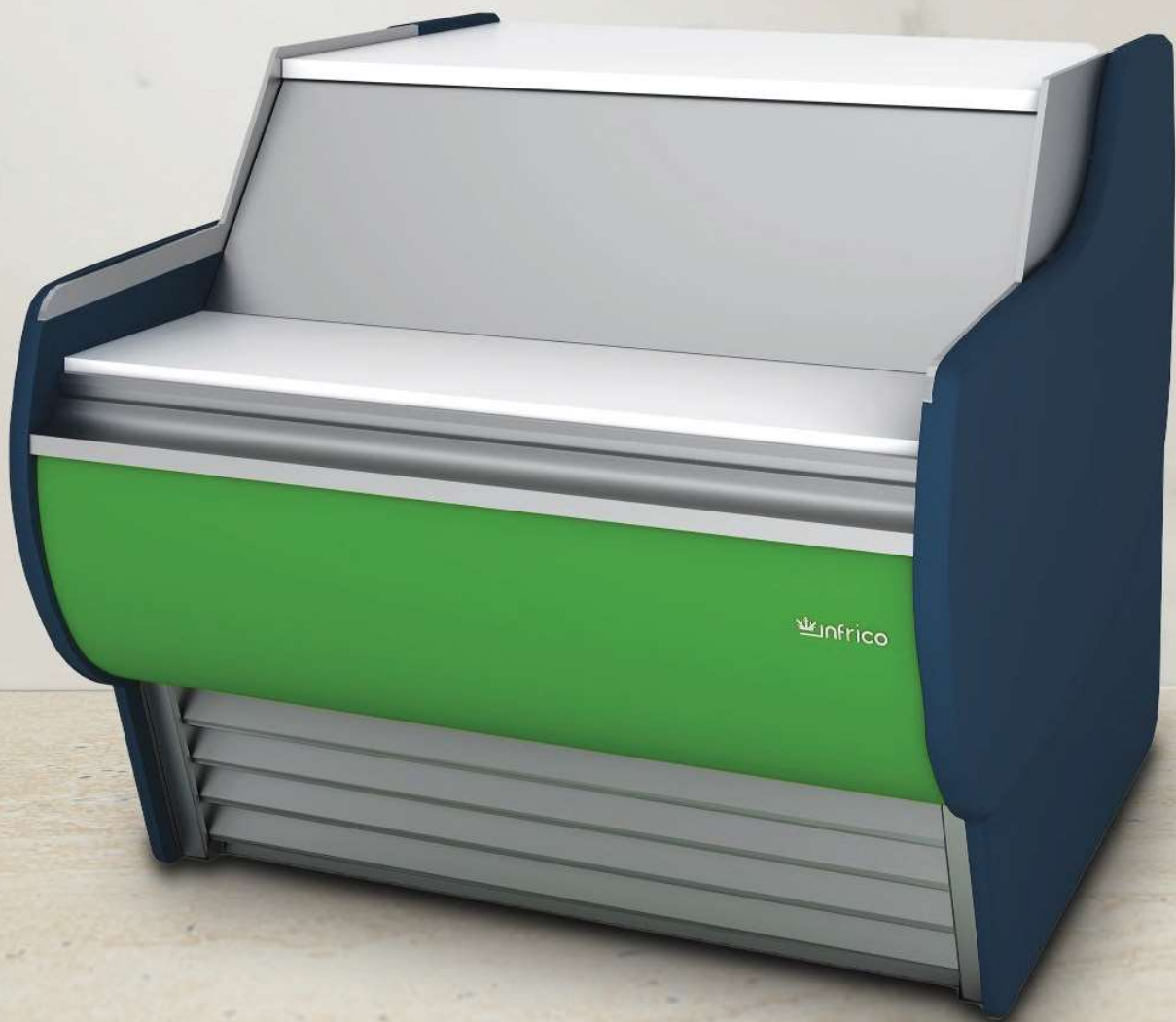




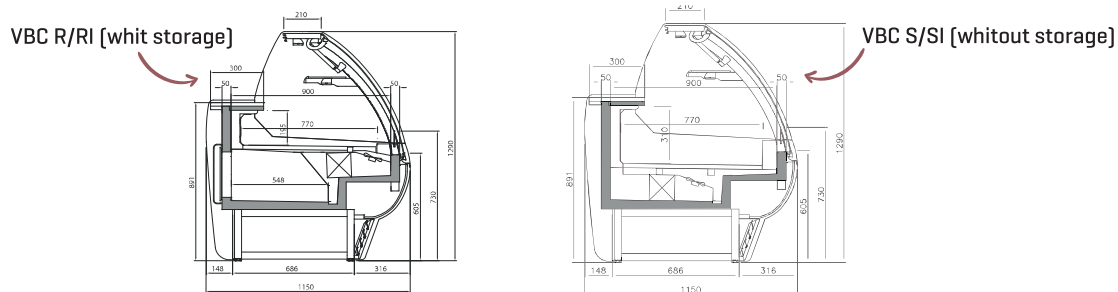
CASH TILL TABLE

# VBC 9C

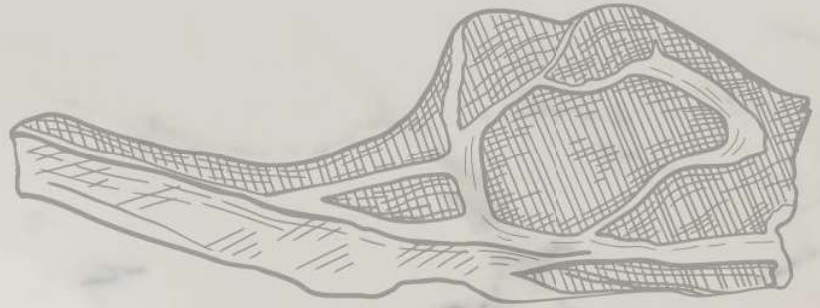
INCORPORATED GROUP



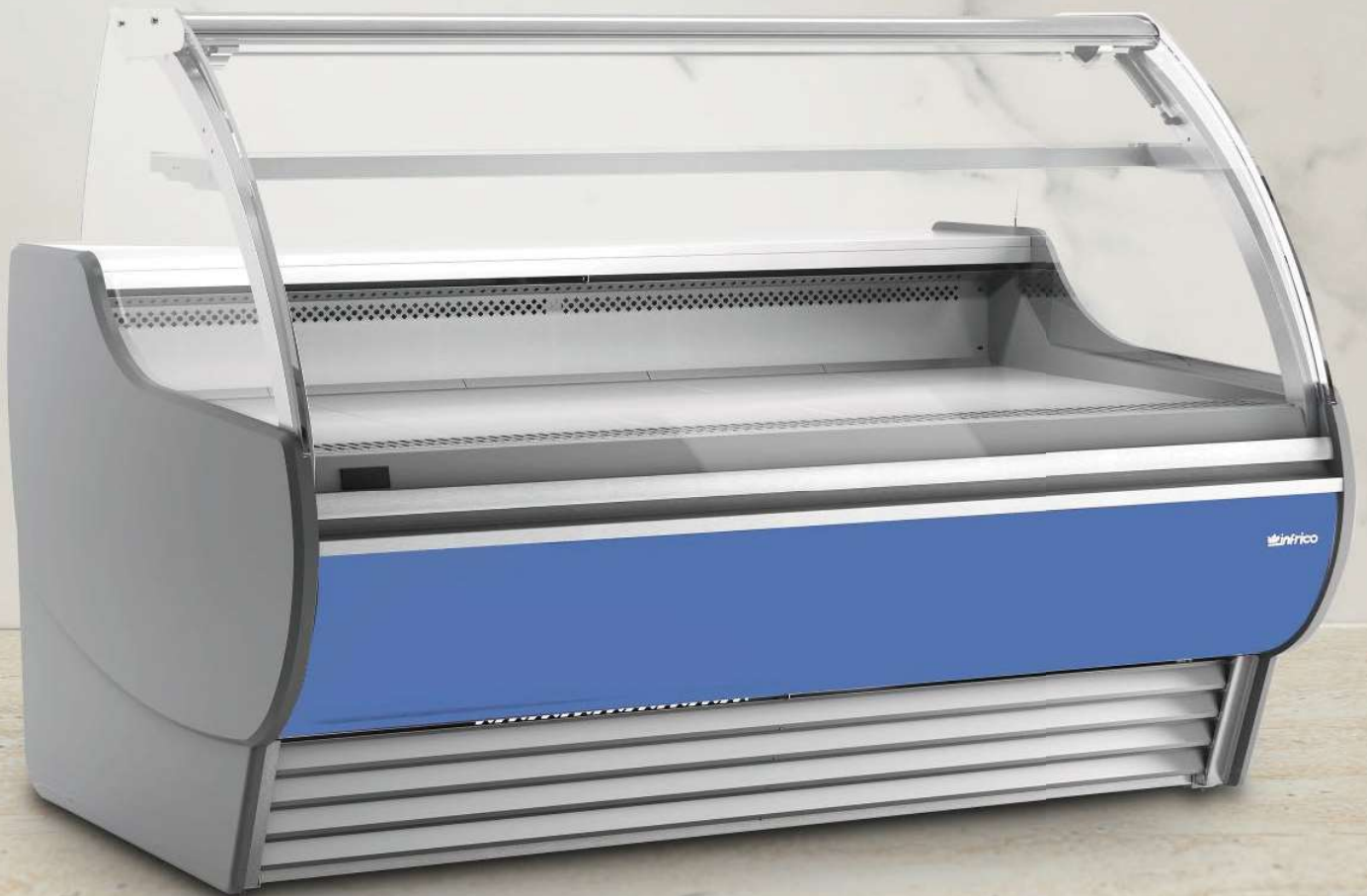
# MODULAR DISPLAY CABINET VENTILATED, REMOTE GROUP



MODEL WHIT STORAGE	VBC 9 R/RI	VBC 12 R/RI	VBC 15 R/RI	VBC 18 R/RI	VBC 25 R/RI	VBC 31 R/RI	VBC 37 R/RI
PRICE							
MODEL WHITOUT STORAGE	VBC 9 S/SI	VBC 12 S/SI	VBC 15 S/SI	VBC 18 S/SI	VBC 25 S/SI	VBC 31 S/SI	VBC 37 S/SI
PRICE							
MEASUREMENTS	938 x 1150 x 1290 mm.	1250 x 1150 x 1290 mm.	1562 x 1150 x 1290 mm.	1875 x 1150 x 1290 mm.	2500 x 1150 x 1290 mm.	3125 x 1150 x 1290 mm.	3750 x 1150 x 1290 mm.
TEMPERATURE	0°C/+6°C						
CLIMATE CLASS	3 / 25°C						
VOLTAGE FREQUENCY	230V/1ph/50Hz						
CONTROLLER	Digital						
MATERIAL	Ext: plastic-coated steel / Worktop: AISI 304 stainless steel / Display top: Plastic-coated steel. / Inox Aisi 304 (Mod. RIU/SIU)						
INSULATION	40kg/m <sup>3</sup> / Free CFC's / Zero ODP-GWP						
CAPACITY	82	109	137	164	219	273	328
DISPLAY AREA	0,92	1,23	1,53	1,84	2,45	3,06	3,68
COMPRESSOR	----	----	----	----	----	----	----
SHELVES	1 [+1 optional]						
SIDE PANELS [2]	30 + 30						
COLD SYSTEM	VENTILATED						
DEFROST	AUTOMATIC						
EVAPORATION	FORCED						
POWER	----	----	----	----	----	----	----
REFRIGERATING POWER	623	830	1037	1245	1660	2075	2490
CONSUMPTION	----	----	----	----	----	----	----
REFRIGERANT	<b>R290</b>						
OPTIONAL	Rear sliding doors / Rear night curtains / Curved heated glass						

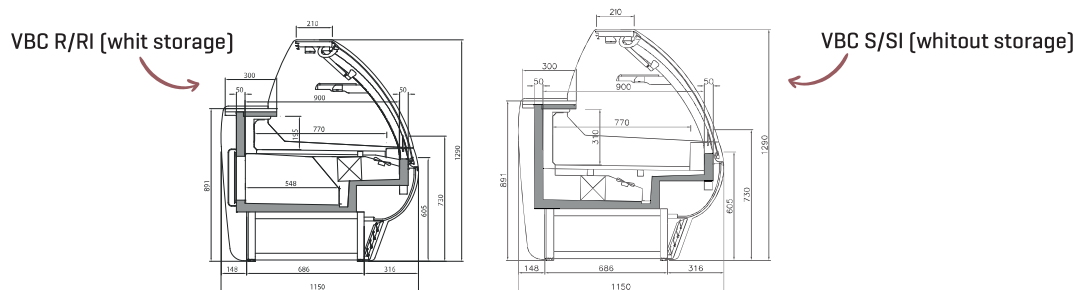


MEAT AND DELI  
**VBC15RI**  
REMOTE GROUP

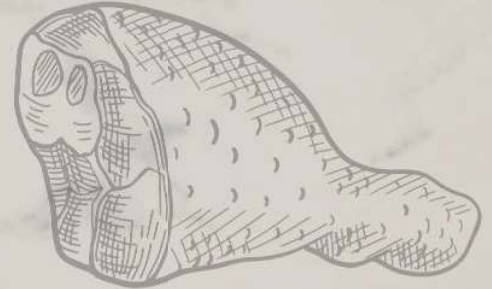


# MODULAR ANGLES DISPLAY CABINE

## VENTILATED COLD REMOTE GROUP



MODEL WHIT STORAGE	VBC 90 AA R/RI	VBC 45 AA R/RI	VBC 90 AC R/RI	VBC 45 AC R/RI
PRICE				
MODEL WHITOUT STORAGE	VBC 90 AA S/SI	VBC 45 AA S/SI	VBC 90 AC S/SI	VBC 45 AC S/SI
PRICE				
MEASUREMENTS	1326 x 1150 x 1290 mm.	1108 x 1150 x 1290 mm.	1887 x 1150 x 1290 mm.	1470 x 1150 x 1290 mm.
TEMPERATURE	0°C/+6°C			
CLIMATE CLASS	3 / 25°C			
VOLTAGE FREQUENCY	230V/1ph/50Hz			
CONTROLLER	Digital			
MATERIAL	Ext: plastic-coated steel / Worktop: AISI 304 stainless steel / Display top: Plastic-coated steel. Inox Aisi 304 [Mod. RIU/SIU]			
INSULATION	40kg/m 3/ Free CFC's / Zero ODP-GWP			
CAPACITY	----	----	----	----
DISPLAY AREA	1,09	0,60	1,43	0,72
COMPRESSOR	----	----	----	----
SHELVES	1 [+1 optional]			
SIDE PANELS [2]	30 + 30			
REFRIGERATION SYSTEM	VENTILATED			
DEFROST	AUTOMATIC			
EVAPORATION	FORCED			
POWER	----	----	----	----
REFRIGERATION POWER	304 W	403 W	1159 W	801 W
CONSUMPTION	----	----	----	----
REFRIGERANT	<b>R290</b>			
OPTIONAL	Rear sliding doors [see models]			



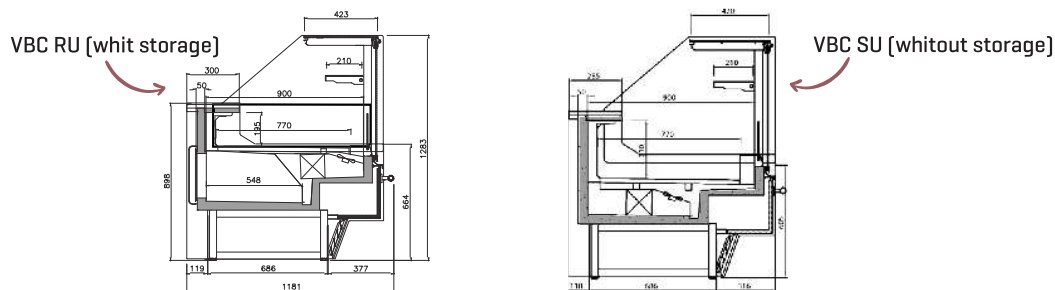
MEAT AND DELI

# VBCLine

REMOTE GROUP



# MODULAR DISPLAY CABINET COLD VENTILATED BUILT-IN GROUP

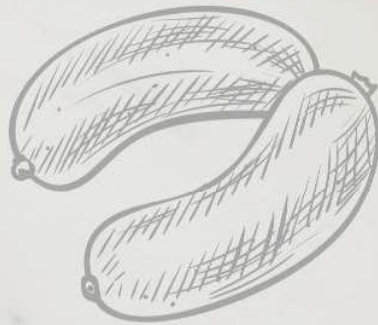


MODEL WHIT STORAGE	VBC 9 RUCP / RIUCP	VBC 12 RUCP / RIUCP	VBC 15 RUCP / RIUCP	VBC 18 RUCP / RIUCP	VBC 25 RUCP / RIUCP	VBC 31 RUCP / RIUCP	VBC 37 RUCP / RIUCP
PRICE							
MODEL WHITOUT STORAGE	VBC 9 SUCP / SIUCP	VBC 12 SUCP / SIUCP	VBC 15 SUCP / SIUCP	VBC 18 SUCP / SIUCP	VBC 25 SUCP / SIUCP	VBC 31 SUCP / SIUCP	VBC 37 SUCP / SIUCP
PRICE							
MEASUREMENTS	938 x 1150 x 1290 mm.	1250 x 1150 x 1290 mm.	1562 x 1150 x 1290 mm.	1875 x 1150 x 1290 mm.	2500 x 1150 x 1290 mm.	3125 x 1150 x 1290 mm.	3750 x 1150 x 1290 mm.
TEMPERATURE	0°C/+6°C						
CLIMATE CLASS	3 / 25°C						
VOLTAGE FREQUENCY	230V/1ph/50Hz						
CONTROLLER	Digital						
MATERIAL	Ext: plastic-coated steel / Worktop: AISI 304 stainless steel / Display top: Plastic-coated steel. / Inox Aisi 304 (Mod. RIU/SIU)						
INSULATION	40kg/m <sup>3</sup> / Free CFC's / Zero ODP-GWP						
CAPACITY	82	109	137	164	219	273	328
DISPLAY AREA	0,92	1,23	1,53	1,84	2,45	3,06	3,68
COMPRESSOR	1/3	1/2	3/4	3/4	1+1/4	1+1/4	1+1/4
SHELVES	1 [+1 optional]						
SIDE PANELS [2]	30 + 30						
REFRIGERATION SYSTEM	VENTILATED						
DEFROST	AUTOMATIC						
EVAPORATION	FORCED						
POWER	374	532	601	702	1177	1210	1234
REFRIGERATION POWER	----	----	----	----	----	----	----
CONSUMPTION	4,7	6,4	7,2	8,4	12,7	14,5	16,3
REFRIGERANT	<b>R290</b>						
OPTIONAL	Rear sliding doors / Rear night blinds						

MEAT AND DELI

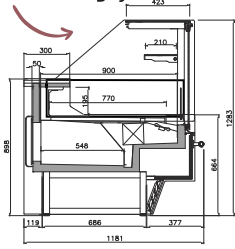
# VBC 12 RUCP

INCORPORATED GROUP

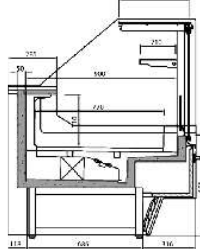


# MODULAR DISPLAY CABINET · CASH TILL TABLE COLD, VENTILATED BUILT-IN GROUP

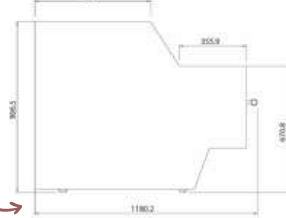
VBC RUCP [whit storage]



VBC SUCP [whitout storage]



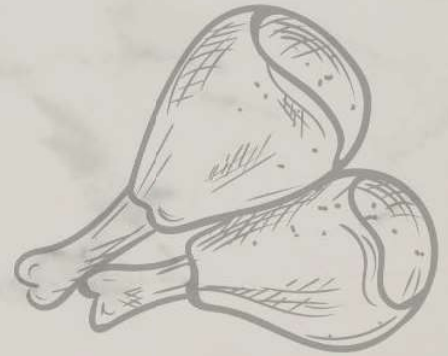
VBC P



CASH TILL TABLE

MODEL WHIT STORAGE	VBC90 A RUCP / RIUCP	VBC90 C RUCP / RIUCP	VBC 9 CP	VBC 12 MP	VBC 15 MP	VBC 12 MHDP
PRICE						
MODEL WHITOUT STORAGE	VBC90 A SUCP / SIUCP	VBC90 C SUCP / SIUCP	-----	-----	-----	-----
PRICE						
MEASUREMENTS	1887 x 1150 x 1290 mm.	1470 x 1150 x 1290 mm.	938 x 1150 x 906 mm.	1250 x 1150 x 906 mm.	1562 x 1150 x 906 mm.	1250 x 1150 x 906 mm.
TEMPERATURE	0°C/+6°C		----			
CLIMATE CLASS	3 / 25°C		----			
VOLTAGE FREQUENCY	230V/1ph/50Hz		----			
CONTROLLER	Digital		----			
MATERIAL	Ext: plastic-coated steel / Worktop: AISI 304 stainless steel / Display top: Plastic-coated steel. / Inox Aisi 304 (Mod. RIU/SIU)					
INSULATION	40kg/m 3/ Free CFC's / Zero ODP-GWP		----			
CAPACITY	1.09	1,43	---	---	---	---
DISPLAY AREA	---	---	0,55	0,74	0,92	---
COMPRESSOR	5/8	3/4	---	---	---	---
SHELVES	----					
SIDE PANELS [2]	30 + 30					
REFRIGERATION SYSTEM	VENTILATED		----			
DEFROST	AUTOMATIC		----			
EVAPORATION	FORCED		----			
POWER	1025	1110	----	----	----	----
REFRIGERATION POWER	----	----	----	----	----	----
CONSUMPTION	14,4	15,5	----	----	----	----
REFRIGERANT	<b>R290</b>		----			
OPTIONAL	Rear sliding doors [see models]		----			





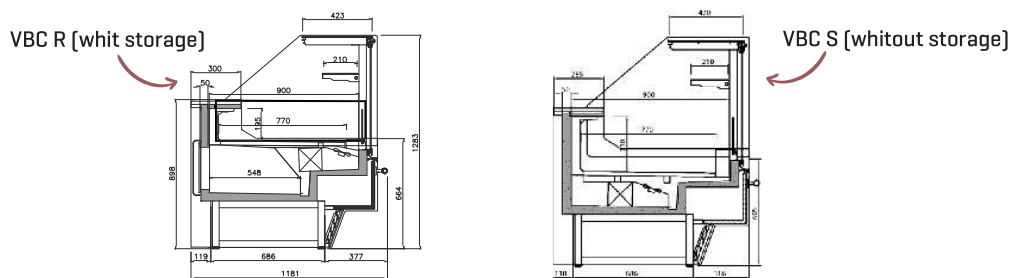
MEAT AND DELI

# VBCLine

INCORPORATED GROUP



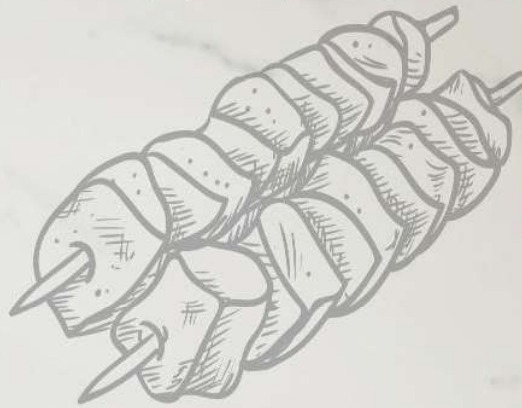
# MODULAR DISPLAY CABINET VENTILATED WITH REMOTE GROUP



MODEL WHIT STORAGE	VBC 9 RCP / RICP	VBC 12 RCP / RICP	VBC 15 RCP / RICP	VBC 18 RCP / RICP	VBC 25 RCP / RICP	VBC 31 RCP / RICP	VBC 37 RCP / RICP
PRICE							
MODEL WHITOUT STORAGE	VBC 9 SCP / SICP	VBC 12 SCP / SICP	VBC 15 SCP / SICP	VBC 18 SCP / SICP	VBC 25 SCP / SICP	VBC 31 SCP / SICP	VBC 37 SCP / SICP
PRICE							
MEASUREMENTS	938 x 1150 x 1290 mm.	1250 x 1150 x 1290 mm.	1562 x 1150 x 1290 mm.	1875 x 1150 x 1290 mm.	2500 x 1150 x 1290 mm.	3125 x 1150 x 1290 mm.	3750 x 1150 x 1290 mm.
TEMPERATURE	0°C/+6°C						
CLIMATE CLASS	3 / 25°C						
VOLTAGE FREQUENCY	230V/1ph/50Hz						
CONTROLLER	Digital						
MATERIAL	Ext: plastic-coated steel / Worktop: AISI 304 stainless steel / Display top: Plastic-coated steel. / Inox Aisi 304 [Mod. RIU/SIU]						
INSULATION	40kg/m <sup>3</sup> / Free CFC's / Zero ODP-GWP						
CAPACITY	82	109	137	164	219	273	328
DISPLAY AREA	0,92	1,23	1,53	1,84	2,45	3,06	3,68
COMPRESSOR	---	---	---	---	---	---	---
SHELVES	1						
SIDE PANELS [2]	30 + 30						
REFRIGERATION SYSTEM	VENTILATED						
DEFROST	AUTOMATIC						
EVAPORATION	FORCED						
POWER	---	---	---	---	---	---	---
REFRIGERATION POWER	656	874	1092	1315	1748	2184	2621
CONSUMPTION	---	---	---	---	---	---	---
REFRIGERANT	<b>R290</b>						
OPTIONAL	Rear sliding doors / Rear night blinds [see models]						

MEAT AND DELI

# VBC 12



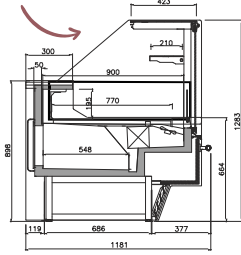
# SCP

INCORPORATED GROUP

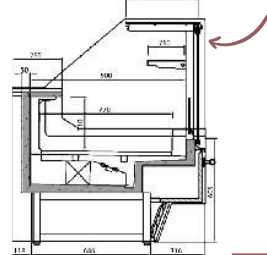


# MODULAR DISPLAY CABINET · CASH TILL TABLE VENTILATED COLD REMOTE GROUP

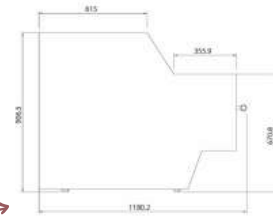
VBC RCP [whit storage]



VBC SCP[whitout storage]



VBC P



CASH TILL TABLE

MODEL WHIT STORAGE	VBC90 AARRCP/AIRRCP	VBC90 ACRRCP/CRRCP	VBC 9 CP	VBC 12 MP	VBC 15 MP	VBC 12 MHDP
PRICE						
MODEL WHITOUT STORAGE	VBC90 AARSCP/ARISCP	VBC90 ACRSCP/CRS CPI	-----	-----	-----	-----
PRICE						
MEASUREMENTS	1887 x 1150 x 1290 mm.	1470 x 1150 x 1290 mm.	938 x 1150 x 906 mm.	1250 x 1150 x 906 mm.	1562 x 1150 x 906 mm.	1250 x 1150 x 906 mm.
TEMPERATURE	0°C/+6°C		----			
CLIMATE CLASS	3 / 25°C		----			
VOLTAGE FREQUENCY	230V/1ph/50Hz		----			
CONTROLLER	Digital		----			
MATERIAL	Ext: plastic-coated steel / Worktop: AISI 304 stainless steel / Display top: Plastic-coated steel. / Inox Aisi 304 (Mod. RIU/SIU)					
INSULATION	40kg/m 3/ Free CFC's / Zero ODP-GWP		----			
CAPACITY	1,09	1,43	---	---	---	---
DISPLAY AREA	---	---	0,55	0,74	0,92	---
COMPRESSOR	---	---	---	---	---	---
SHELVES	---					
SIDE PANELS [2]	30 + 30					
REFRIGERATION SYSTEM	VENTILATED		----			
DEFROST	AUTOMATIC		----			
EVAPORATION	FORCED		----			
POWER	----					
REFRIGERATION POWER	1096	1315	---	---	---	---
CONSUMPTION	----					
REFRIGERANTE	<b>R290</b>		----			
OPTIONAL	Rear sliding doors [see models]					



MEAT AND DELI

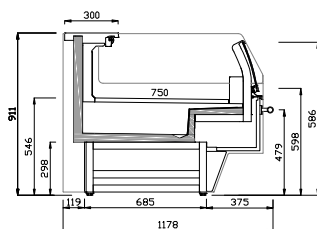
# VBCLine

INCORPORATED GROUP

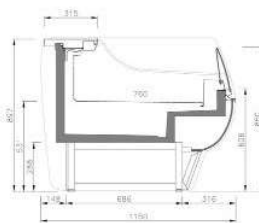


# MODULAR DISPLAY CABINE

## COLD VENTILATED BUILT-IN GROUP



VBC SUCB CP



VBC SUCB

MODEL CURVED	VBC 9 SUCB / SIUCB	VBC 12 SUCB / SIUCB	VBC 15 SUCB / SIUCB	VBC 18 SUCB / SIUCB	VBC 25 SUCB / SIUCB
PRICE					
MODEL FLAT	VBC 9 SUCB CP / SIUCB CP	VBC 12 SUCB CP / SIUCB CP	VBC 15 SUCB CP / SIUCB CP	VBC 18 SUCB CP / SIUCB CP	VBC 25 SUCB CP / SIUCB CP
PRICE					
MEASUREMENTS	938 x 1181 x 897 mm.	1250 x 1181 x 897 mm.	1562 x 1181 x 897 mm.	1875 x 1181 x 897 mm.	2500 x 1181 x 897 mm.
TEMPERATURE	0°C/+6°C				
CLIMATE CLASS	3 / 25°C				
VOLTAGE FREQUENCY	230V/1ph/50Hz				
CONTROLLER	Digital				
MATERIAL	Ext: plastic-coated steel / Worktop: AISI 304 stainless steel / Display top: Plastic-coated steel. / Inox Aisi 304 [Mod. RIU/SIU]				
INSULATION	40kg/m <sup>3</sup> / Free CFC's / Zero ODP-GWP				
CAPACITY	108	144	180	217	289
DISPLAY AREA	0,72	0,96	1,20	1,44	1,93
COMPRESSOR	1/3	1/2	3/4	3/4	1+1/4
SHELVES	---				
SIDE PANELS [2]	30 + 30				
REFRIGERATION SYSTEM	VENTILATED				
DEFROST	AUTOMATIC				
EVAPORATION	FORCED				
POWER	593	701	816	826	1207
REFRIGERATION POWER	---				
CONSUMPTION	7,10	8,04	9,80	10,1	14,5
REFRIGERANT	<b>R290</b>				
OPTIONAL	----				

MEAT AND DELI

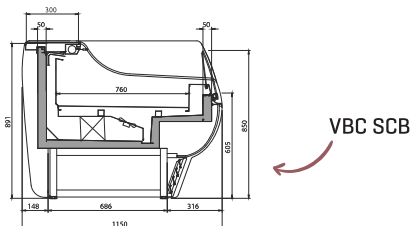
# VBC 15 SU CB

INCORPORATED GROUP



# MODULAR DISPLAY CABINET

## VENTILATED COLD REMOTE GROUP



MODEL CURVED	VBC 9 SCB / SICB	VBC 12 SCB / SICB	VBC 15 SCB / SICB	VBC 18 SCB / SICB	VBC 25 SCB / SICB
PRICE					
MODEL FLAT	VBC 9 SCB CP / SICB CP	VBC 12 SCB CP / SICB CP	VBC 15 SCB CP / SICB CP	VBC 18 SCB CP / SICB CP	VBC 25 SCB CP / SICB CP
PRICE					
MEASUREMENTS	938 x 1181 x 897 mm.	1250 x 1181 x 897 mm.	1562 x 1181 x 897 mm.	1875 x 1181 x 897 mm.	2500 x 1181 x 897 mm.
TEMPERATURE	0°C/+6°C				
CLIMATE CLASS	3 / 25°C				
VOLTAGE FREQUENCY	230V/1ph/50Hz				
CONTROLLER	Digital				
MATERIAL	Ext: plastic-coated steel / Worktop: AISI 304 stainless steel / Exposure top: Plastic-coated steel. / Inox Aisi 304 (Mod. RIU/SIU)				
INSULATION	40kg/m 3/ Free CFC's / Zero ODP-GWP				
CAPACITY	108	144	180	217	289
DISPLAY AREA	0,72	0,96	1,20	1,44	1,93
COMPRESSOR	---	---	---	---	---
SHELVES	----				
SIDE PANELS {2}	30 + 30				
REFRIGERATION SYSTEM	VENTILATED				
DEFROST	AUTOMATIC				
EVAPORATION	FORCED				
POWER	---	---	---	---	---
REFRIGERATION POWER	817	1096	1315	1506	2009
CONSUMPTION	---	---	---	---	---
REFRIGERANT	<b>R290</b>				
OPTIONAL	----				

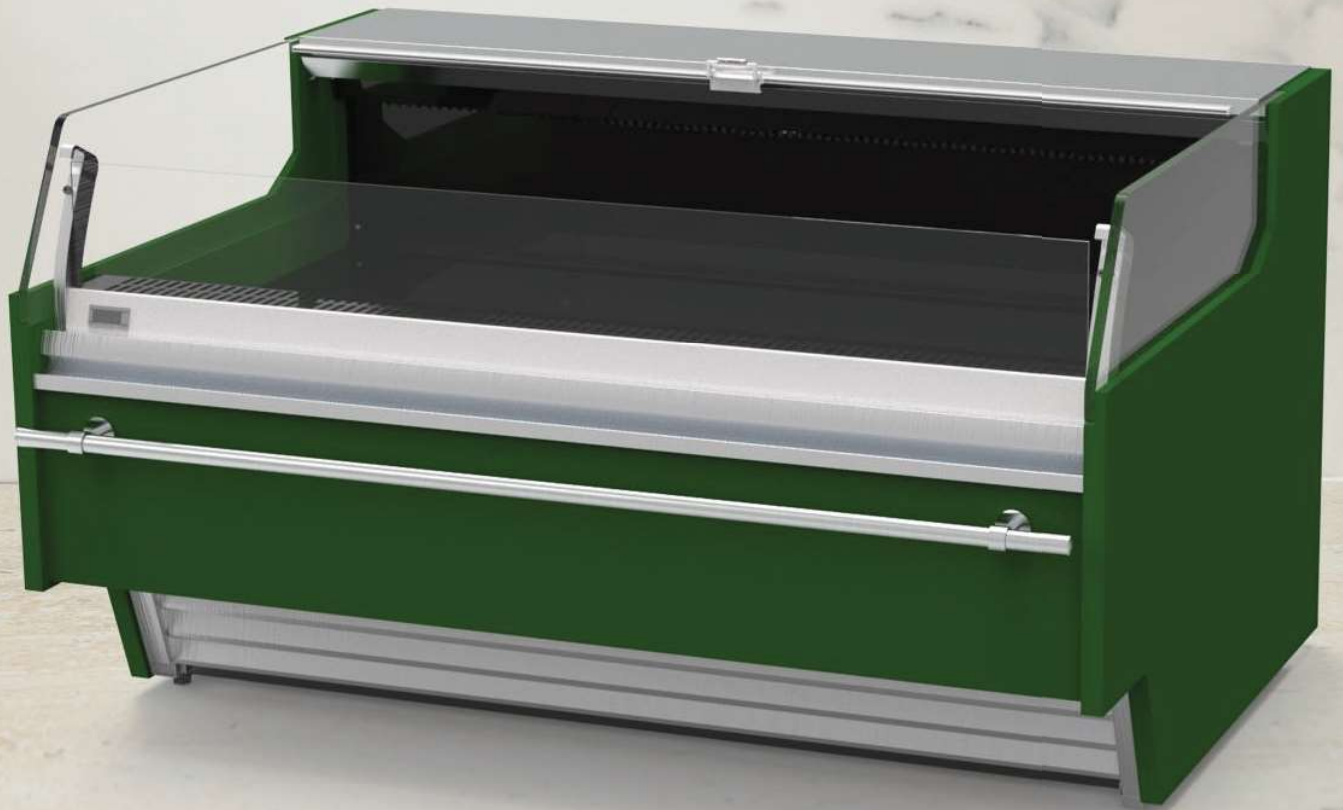




MEAT AND DELI

# VBC 15 SCB CP

REMOTE GROUP



## STANDARD EXTERIOR COLOURS

Ask for colours not included  
in the standard choices.

---

Ral 2003



Blanco



Ral 3003



Ral 1001



Ral 3020



Ral 1018



Design 2108025



Ral 5015



Design 3504035



Ral 4007



Ral 9006



Ral 6002



Ral 7016



Design 1107060



Ral 8017



# BARCELONA SHOWCASES

## FRESHNESS AND QUALITY

With a design to maximize the visibility of the displayed product, the Infrico Barcelona Series Showcase is the perfect choice to highlight your meat, charcuterie and delicatessen products.

Its illuminated glass middle shelf highlights every detail, attracting the attention of your customers and enhancing the presentation of your products.

The high-efficiency double LED lighting provides a bright and uniform light, always guaranteeing perfect visibility of your products. In addition, thanks to its modular design, the Barcelona Series Showcase offers a wide range of products with designs for all types of commercial sales, adapting to your specific needs.

You can choose between models with or without a refrigerated reserve, centralized installation or with a built-in group, adapting to your preferences and needs. The straight or curved glass structure provides an elegant and modern touch to your space, complementing the presentation of your products with style.

With a wide range of options and colours, you have the ability to customize your display case to your preferences and brand style. Creating an even more impressive and striking presentation for your products.

Choose Infrico's Barcelona Series Showcase and elevate the presentation of your products by providing an unbeatable shopping experience.

GRUPO   
**Infrico**®

Ctra. de Aguilar a A-318 por Moriles, km 15,5 - A-3132

CP 14900 LUCENA, Córdoba - España

Tel: 0034 957 51 30 68

[info@infrico.com](mailto:info@infrico.com)



[www.infrico.com](http://www.infrico.com)

